

REVISIONS				
REV.	ZONE	DESCRIPTION	DATE	DRAWN
A		ADDED EXTENSION BUSHING AND GROMMET	1/89	MP
B		CORRECTED MOTOR WIRING, WAS: C - BRN - J, G - RED - P, K - BLU - V, H - YEL - Q	7/89	JLD
B1		CORRECTED PART NUMBER	3/92	LTR
C		ADDED ECN 2869	9/8/97	NTC
D		ADDED ECN6963	05/03	JRF

AMP PLUG #745496-2 (ECK786)
BACKSHELL #17-1726-2 (ECK656)
682A1023 (ECX413)
SIGNAL BUNDLE #24 AWG
UNLESS OTHERWISE NOTED

PIN	WIRE	SIGNAL
13	RED/YEL	BRK-
12	WHT/BLU	CW/+ LMT
11	-	-
10	-	-
9	-	-
8	WHT/BLK/RED	TACH -
7	WHT/GRY	MKR
6	WHT/BRN	MKR-N
5	-	-
4	-	-
3	#22 YEL	ENC +5V
2	-	-
1	SHIELD	SIG SHLD
14	WHT/RED	COS
15	WHT/ORN	COS-N
16	#22 PINK	LMT +5V
17	WHT/YEL	SIN
18	WHT/GRN	SIN-N
19	GRY	TACH+
20	#22 BRN	LMT COM
21	#22 WHT/BLK	ENC COM
22	RED/BLK	HM LMT
23	-	-
24	WHT/VIO	CCW/- LMT
25	WHT/BLK/BRN	BRK+

682A1023 (ECX413)
#24 AWG UNLESS OTHERWISE NOTED

SIGNAL	WIRE	PIN
LMT +5V	#22 PINK	W
LMT COM	#22 BRN	X
TACH+	GRY	Y
TACH-	WHT/BLK/RED	Z
CW/+ LMT	WHT/BLU	R
CCW/- LMT	WHT/VIO	S
HM LMT	RED/BLK	T
BRK-	RED/YEL	U
MTR-	#16 YEL	V
COS-N	WHT/ORN	K
SIN-N	WHT/GRN	L
MKR-N	WHT/BRN	M
FRM GND	#16 GRN	N
MTR+	#16 ORN	P
MTR-	#16 BLU	Q
COS	WHT/RED	E
SIN	WHT/YEL	F
MKR	WHT/GRY	G
BRK+	WHT/BLK/BRN	H
MTR+	#16 RED	J
ENC+5V	#22 YEL	A
ENC COM	#22 WHT/BLK	B
SIG SHLD	SHIELD	C
MTR SHLD	SHIELD	D

STR. PLUG MS3106A-24 (MCM466) (STD)
ANGLE PLUG MS3108A-24 (DPT.)
ANGLE PLUG MS3108B-24 (MCM470) (DPT.)
INSERT MS24-28S (MCM469)
CLAMP 97-3057-1016 (MCM467)
BUSHING AN3055-28-16 (MCM474)

USE 2" LENGTHS OF THICK WALL HEATSHRINK TUBING TO BUILD UP CABLE DIAMETER FOR PROPER STRAIN RELIEFING. STRAIN RELIEFING MUST WITHSTAND 35 LB. PULL.

CUT THICK WALL HEATSHRINK TUBING WITH CABLE CUTTER SUCH THAT ENDS ARE PERPENDICULAR TO CABLE AND CUT IS SMOOTH.

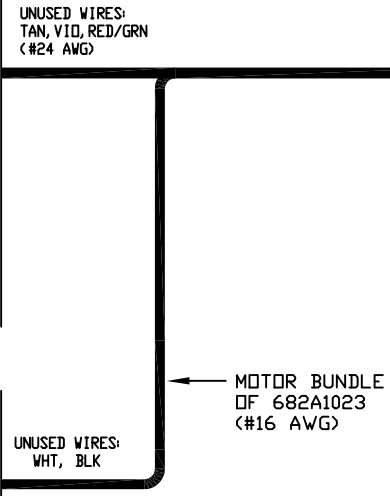
THICK WALL HEATSHRINK TUBING:
AMP # 53701-1 (EIW00112) MAX INSIDE DIA = .750" (EXPANDED), MIN INSIDE DIA = .220" (RECOVERED)

AMP # 53700-1 (EIW00113) MAX INSIDE DIA = .400" (EXPANDED), MIN INSIDE DIA = .150" (RECOVERED)

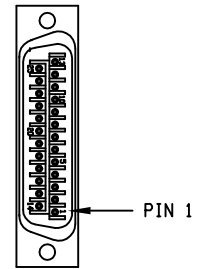
STARTING CABLE LENGTH = 15 FT 5 IN

PIN	WIRE	SIGNAL
K	BLU	MTR-
J	-	-
H	YEL	MTR-
G	RED	MTR+
F	SHIELD	MTR SHLD
E	GRN	FRM GND
D	-	-
C	BRN	MTR+
B	-	-
A	-	-

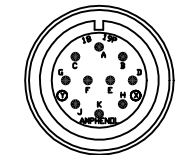
PLUG MS3106A-18 (MCM475)
INSERT MS18-19P (MCM476)
BUSHING AN3055-18-10 (MCM481)
CLAMP 97-3057-1010 (MCM477)



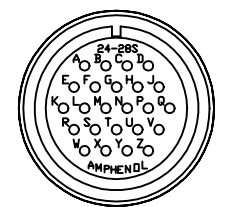
FOR CRIMP TOOL USE AMP HANDLE ASSY 58074-1 WITH AMP HEAD ASSY 58063-2



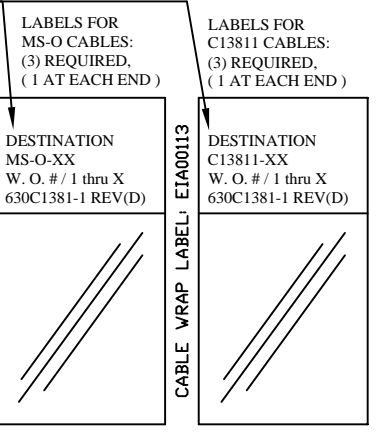
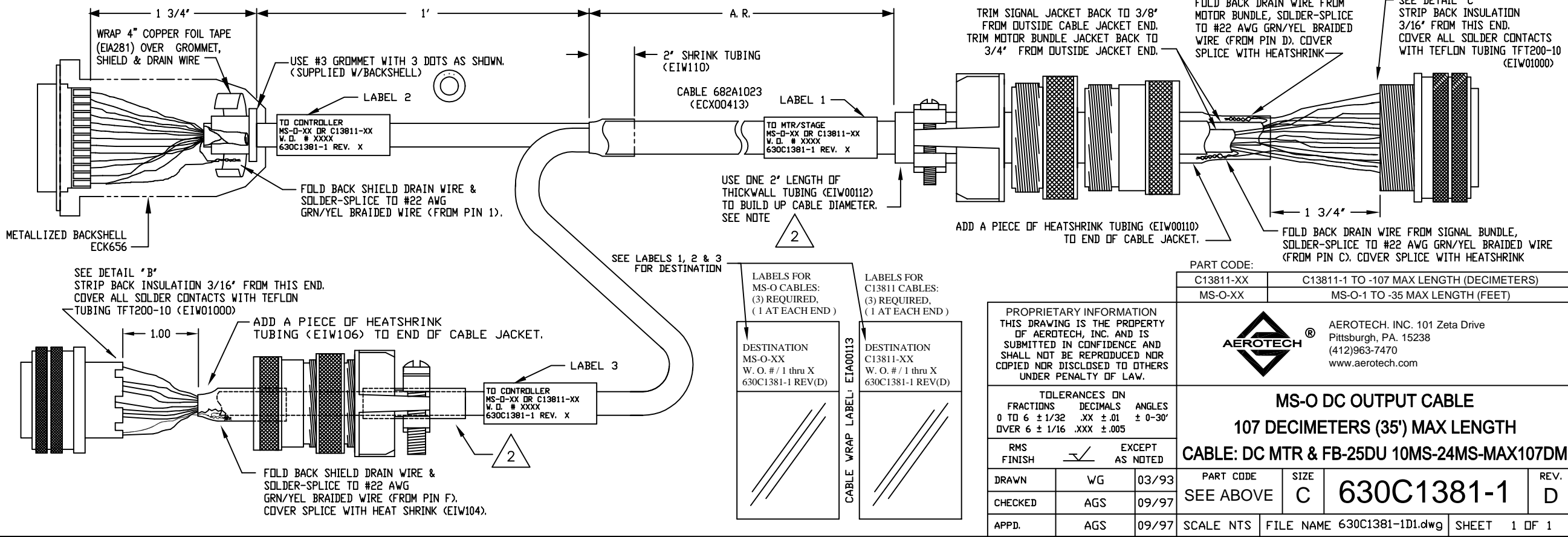
DETAIL "A"
AMP PLUG 745496-2 (ECK786)
VIEWED FROM WIRE SIDE OF CONNECTOR



DETAIL "B"
INSERT MS18-19P (MCM476)
VIEWED FROM WIRE SIDE OF CONNECTOR



DETAIL "C"
INSERT MS24-28S (MCM469)
VIEWED FROM WIRE SIDE OF CONNECTOR



PROPRIETARY INFORMATION THIS DRAWING IS THE PROPERTY OF AEROTECH, INC. AND IS SUBMITTED IN CONFIDENCE AND SHALL NOT BE REPRODUCED NOR COPIED NOR DISCLOSED TO OTHERS UNDER PENALTY OF LAW.

TOLERANCES ON		
FRACTIONS	DECIMALS	ANGLES
0 TO 6 ± 1/32	.XX ± .01	± 0-30'
OVER 6 ± 1/16	.XXX ± .005	

RMS FINISH	EXCEPT AS NOTED
DRAWN	WG 03/93
CHECKED	AGS 09/97
APPD.	AGS 09/97

PART CODE:	
C1381-XX	C1381-1 TO -107 MAX LENGTH (DECIMETERS)
MS-O-XX	MS-O-1 TO -35 MAX LENGTH (FEET)
AEROTECH, INC. 101 Zeta Drive Pittsburgh, PA. 15238 (412)963-7470 www.aerotech.com	
MS-O DC OUTPUT CABLE 107 DECIMETERS (35') MAX LENGTH CABLE: DC MTR & FB-25DU 10MS-24MS-MAX107DM	
DRAWN	WG 03/93
CHECKED	AGS 09/97
APPD.	AGS 09/97
PART CODE	SIZE
SEE ABOVE	C
REV.	D
SCALE NTS	FILE NAME 630C1381-1D1.dwg
SHEET 1	OF 1