

REVISIONS				
REV.	ZONE	DESCRIPTION	DATE	DRAWN
A		CHANGED WIRING TO PHENIX CONNECTOR TO PERMIT USE WITH 310SM	9/93	WG
B		ADDED ECN3071	11/12/97	NTC

CONNECTOR 25 PIN D MALE AMP #745496-2 (ECK786)
BACKSHELL #17-1726-2 (ECK656)

682A1023 (ECX413)
#24 AWG UNLESS OTHERWISE NOTED

PIN	WIRE	SIGNAL
13	RED/YEL	CW LMT Δ
12	WHT/BLU	CW/+ LMT
11	-	-
10	-	-
9	-	-
8	-	-
7	WHT/GRY	MKR
6	WHT/BRN	MKR-N
5	-	-
4	-	-
3	#22 YEL	ENC +5V
2	-	-
1	SHIELD	SIG SHLD
14	WHT/RED	COS
15	WHT/ORN	COS-N
16	#22 PINK	LMT +5V
17	WHT/YEL	SIN
18	WHT/GRN	SIN-N
19	GRY	SPARE
20	#22 BRN	LMT COM
21	#22 WHT/BLK	ENC COM
22	RED/BLK	HM LMT
23	RED/GRN	HOME LMT Δ
24	WHT/VIO	CCW/- LMT
25	WHT/BLK/BRN	CCW LMT Δ

UNUSED WIRES:
#24 TAN, VIO, WHT/BLK/RED

682A1023 (ECX413)
#24 AWG UNLESS OTHERWISE NOTED

SIGNAL	WIRE	PIN
MKR-N	WHT/BRN	W
SIN-N	WHT/GRN	X
SIN	WHT/YEL	Y
SIG SHLD	SHIELD	Z
MKR	WHT/GRY	R
COS-N	WHT/ORN	S
COS	WHT/RED	T
LMT +5V	#22 PINK	U (1/2)
ENC +5V	#22 YEL	U (2/2)
MTR B-N	#16 WHT	V
HM LMT	RED/BLK	K
Δ HOME LMT	RED/GRN	L
SPARE	GRY	M
ENC COM	#22 WHT/BLK	N (1/2)
LMT COM	#22 BRN	N (2/2)
-	-	P
MTR B	#16 YEL	Q
CCW/- LMT	WHT/VIO	E
Δ CCW LMT	WHT/BLK/BRN	F
MTR SHLD	SHIELD	G
-	-	H
MTR A	#16 BLK	J
CW/+LMT	WHT/BLU	A
Δ CW LMT	RED/YEL	B
FRM GND	#16 GRN	C
MTR A-N	#16 RED	D

STR. PLUG MS3106A-24 (MCM466) (STD)
ANGLE PLUG MS3108A-24 (DPT.)
ANGLE PLUG MS3108B-24 (MCM470) (DPT.)
INSERT MS24-28S (MCM469)
CLAMP 97-3057-1016 (MCM467)
BUSHING AN3055-28-16 (MCM474)

NOTE: KEY PLUG TO POSITION "W"
ON INSERT



ACTIVE HIGH SIGNALS FOR USE WITH PREVIOUS GENERATION AEROTECH CONTROLLERS (UNIDEX, UNIDEX 2, UNIDEX 3, UNIDEX 11, UNIDEX 12, UNIDEX 16)



USE 2" LENGTHS OF THICK WALL HEATSHRINK TUBING TO BUILD UP CABLE DIAMETER FOR PROPER STRAIN RELIEFING. STRAIN RELIEFING MUST WITHSTAND 35 LB. PULL.

CUT THICK WALL HEATSHRINK TUBING WITH CABLE CUTTER SUCH THAT ENDS ARE PERPENDICULAR TO CABLE AND CUT IS SMOOTH.

THICK WALL HEATSHRINK TUBING:
AMP # 53701-1 (EIW00112) MAX INSIDE DIA = .750" (EXPANDED), MIN INSIDE DIA = .220" (RECOVERED)
AMP # 53700-1 (EIW00113) MAX INSIDE DIA = .400" (EXPANDED), MIN INSIDE DIA = .150" (RECOVERED)



STARTING CABLE LENGTH = 15 FT 5 IN

PIN	WIRE	SIGNAL
1(1/2)	SHIELD	MTR SHLD
1(2/2)	#16 GRN	FRM GND
2	#16 RED	MTR A-N
3	#16 BLK	MTR A
4	#16 WHT	MTR B-N
5	#16 YEL	MTR B

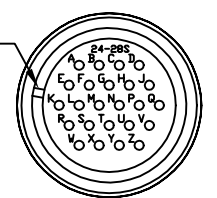
UNUSED WIRES:
#16 BLU, DRN

MOTOR BUNDLE OF 682A1023

FOR CRIMP TOOL USE AMP HANDLE ASSY 58074-1 WITH AMP HEAD ASSY 58063-2



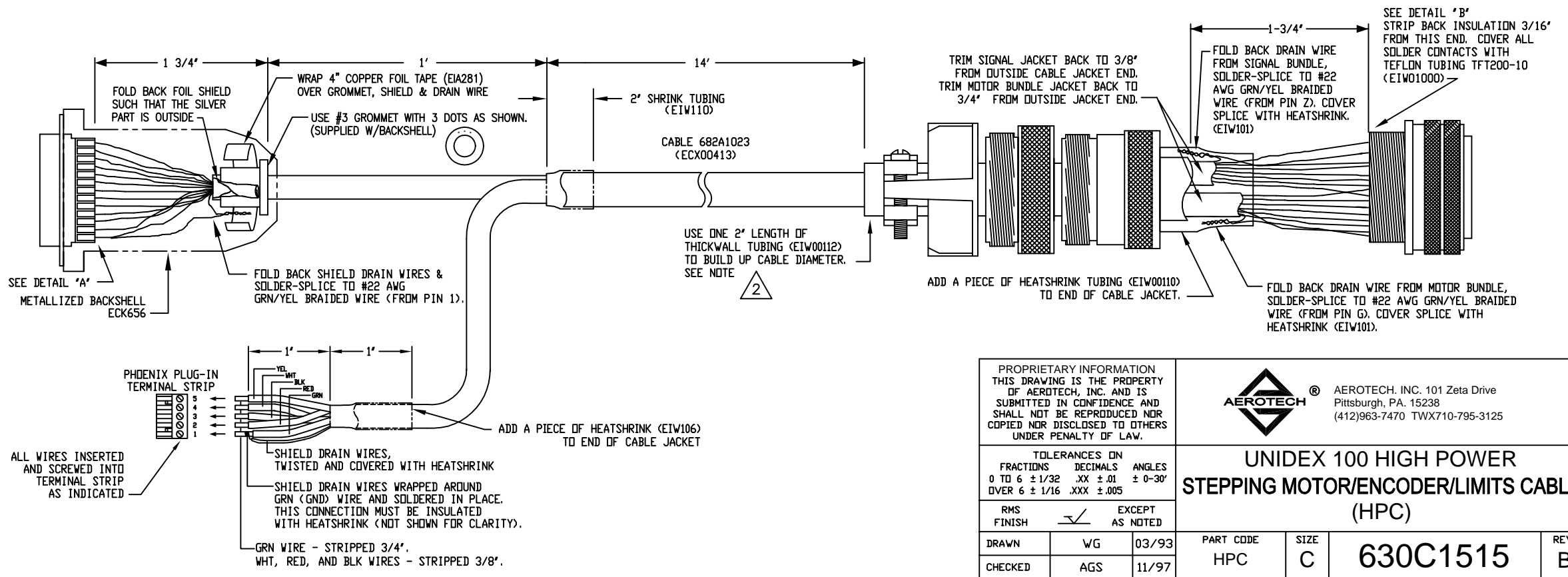
DETAIL "A"
AMP PLUG 745496-2 (ECK786)
VIEWED FROM WIRE SIDE OF CONNECTOR



DETAIL "B"
INSERT MS24-28S (MCM469)
VIEWED FROM WIRE SIDE OF CONNECTOR

REMOVE TAPE FROM INSERT SO PLUG CAN BE KEYED AT POSITION "W"

PHENIX CONTACT - 5 PIN PLUG-IN TERMINAL STRIP 1754504 (ECK212)



PROPRIETARY INFORMATION THIS DRAWING IS THE PROPERTY OF AEROTECH, INC. AND IS SUBMITTED IN CONFIDENCE AND SHALL NOT BE REPRODUCED NOR COPIED NOR DISCLOSED TO OTHERS UNDER PENALTY OF LAW.		
TOLERANCES ON FRACTIONS 0 TO 6 ± 1/32	DECIMALS .XX ± .01 OVER 6 ± 1/16	ANGLES ± 0-30' XXX ± .005
RMS FINISH	EXCEPT AS NOTED	
DRAWN	WG	03/93
CHECKED	AGS	11/97
APPD.	AGS	11/97

AEROTECH®
AEROTECH, INC. 101 Zeta Drive
Pittsburgh, PA. 15238
(412)963-7470 TWX710-795-3125

UNIDEX 100 HIGH POWER STEPPING MOTOR/ENCODER/LIMITS CABLE (HPC)

PART CODE HPC	SIZE C	630C1515	REV. B
SCALE NTS	FILE NAME 630C1515B1.dwg	SHEET 1 OF 1	