

REVISIONS				
REV.	ZONE	DESCRIPTION	DATE	DRAWN
A		ADDED ECN1290 FOR USE WITH REV. B BA10/BA20/BA30 (690D1499)	8/95	WJG
B		ADDED ECN1429 & ECN1692	02-12-96	WJG
C		ADDED ECN2745	6/4/97	NTC
D		ADDED ECN4618	1/19/00	JAB
E		ADDED ECN9885, ADDED CABLE LABEL INFO	2/6/07	MS

BA SERIES
SERVO AMP

TYPICAL INTERCONNECT

NOTE: SYSTEM CONFIGURATION DETERMINES WHETHER APPLICABLE SIGNAL CONNECTS TO BA10/20 OR NOT.

P1	FLYING LEAD	WIRE	SIGNAL
1	FLYING LEAD	SHIELD	SIG SHLD
2	FLYING LEAD	RED/GRN	ENC +5V
2	FLYING LEAD	RED/BLK	ENC +5V
2	FLYING LEAD	RED/BLK/WHT	ENC +5V
2	FLYING LEAD	BLK/WHT/RED	ENC +5V
3			
4	FLYING LEAD	RED/WHT	HA
5	FLYING LEAD	WHT/RED	COS
6	FLYING LEAD	ORN/RED	COS-N
7			
8			
9			
10			
11			
12			
13			
14	FLYING LEAD	BLU	ENC COM
14	↑	GRN/BLK	ENC COM
14		ORN/GRN	ENC COM
14		GRN/BLK/WHT	ENC COM
15		GRN	LMT COM
16		BLK/WHT	HB
17		BLU/WHT	HC
18		BLU/RED	SIN
19	↓	BLK/RED	SIN-N
20	FLYING LEAD	RED	LMT +5V

FLYING LEAD	WIRE	SIGNAL
FLYING LEAD	WHT/BLK	BRK+
↑	GRN/WHT	BRK-
	BLU/BLK	MKR
	ORN/BLK	MKR-N
	WHT	CW/+ LMT
↓	BLK	CCW/- LMT
FLYING LEAD	ORN	HM LMT

STRAIGHT PLUG MS3106F-20 (MCM454)
INSERT MS20-29S (MCM464)
CLAMP 97-3057-1012 (MCM457)
BUSHING AN3055-22-12 (MCM493)

CONSOLIDATED #5737-CL
(25 COND. #22), ECX01044

SIGNAL	WIRE	SOCKET
ENC COM	BLU	G(1/4)
ENC COM	GRN/BLK	G(2/4)
ENC COM	ORN/GRN	G(3/4)
ENC COM	GRN/BLK/WHT	G(4/4)
ENC +5V	RED/GRN	H(1/4)
ENC +5V	RED/BLK	H(2/4)
ENC +5V	RED/BLK/WHT	H(3/4)
ENC +5V	BLK/WHT/RED	H(4/4)
MKR-N	ORN/BLK	F
SIG SHLD	SHIELD	J
BRK+	WHT/BLK	S
-	-	R
MKR	BLU/BLK	E
HA	RED/WHT	K
BRK-	GRN/WHT	T
HC	BLU/WHT	P
SIN-N	BLK/RED	D
-	-	L
-	-	N
SIN	BLU/RED	C
HB	BLK/WHT	M
COS-N	ORN/RED	B
COS	WHT/RED	A

SIGNAL	WIRE	SOCKET
LMT +5V	RED	1
LMT COM	GRN	2
CW/+ LMT	WHT	3
HM LMT	ORN	4
CCW/- LMT	BLK	5

3

USE 2" LENGTHS OF THICK WALL HEATSHRINK TUBING (EIW00113 - QTY 1, EIW00112 - QTY 1) TO BUILD UP CABLE DIAMETER FOR PROPER STRAIN RELIEFING. STRAIN RELIEFING MUST WITHSTAND 35 LB. PULL.

2

CUT THICK WALL HEATSHRINK TUBING WITH CABLE CUTTER SUCH THAT ENDS ARE PERPENDICULAR TO CABLE AND CUT IS SMOOTH.

THICK WALL HEATSHRINK TUBING:

AMP # 53701-1 (EIW00112) MAX INSIDE DIA = .750" (EXPANDED), MIN INSIDE DIA = .220" (RECOVERED)

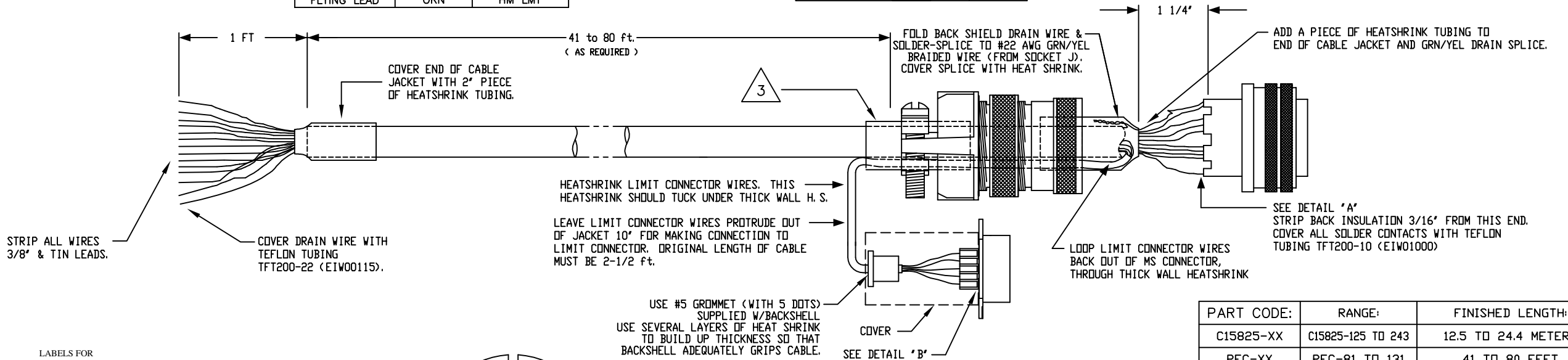
AMP # 53700-1 (EIW00113) MAX INSIDE DIA = .400" (EXPANDED), MIN INSIDE DIA = .150" (RECOVERED)

1

FOR CRIMP TOOL USE AMP HANDLE ASSY 58074-1 WITH AMP HEAD ASSY 58063-2

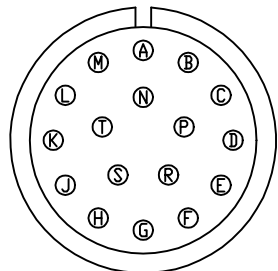
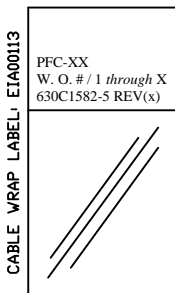
STARTING CABLE LENGTH = 61in. BEYOND SPECIFIED CABLE LENGTH

AMP SOCKET #745491-2 (ECK781)
AMPHENOL BACKSHELL #17-1724-2 (ECK01021)

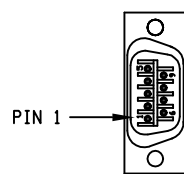


PART CODE:	RANGE:	FINISHED LENGTH:
C15825-XX	C15825-125 TO 243	12.5 TO 24.4 METERS
PFC-XX	PFC-81 TO 131	41 TO 80 FEET

LABELS FOR C15825 CABLES: (2) REQUIRED, (1 AT EACH END)



DETAIL "A"
VIEWED FROM WIRE SIDE OF CONNECTOR
AMPHENOL SOCKET INSERT MS20-29S (MCM464)



DETAIL "B"
VIEWED FROM WIRE SIDE OF CONNECTOR
AMP SOCKET #745491-2 (ECK781)

PROPRIETARY INFORMATION
THIS DRAWING IS THE PROPERTY OF AEROTECH, INC. AND IS SUBMITTED IN CONFIDENCE AND SHALL NOT BE REPRODUCED NOR COPIED NOR DISCLOSED TO OTHERS UNDER PENALTY OF LAW.



AEROTECH, INC. 101 Zeta Drive
Pittsburgh, PA. 15238
(412)963-7470 TWX710-795-3125

TOLERANCES ON		
FRACTIONS	DECIMALS	ANGLES
0 TO 6 ± 1/32	.XX ± .01	± 0-30'
OVER 6 ± 1/16	.XXX ± .005	

RMS FINISH	EXCEPT AS NOTED	
DRAWN	LTR	02/95
CHECKED	JAB	01/00
APPD.	JAB	01/00

**BA SERIES FEEDBACK CABLE (PFC)
(CABLE LENGTHS 41 TO 80 FT.)**

PART CODE	SIZE	REV.
PFC	C	E
630C1582-5		
SCALE NTS	FILE NAME 630C1582-5E1.dwg	SHEET 1 OF 1