

REVISIONS				
REV.	ZONE	DESCRIPTION	DATE	APPROVAL
A		ECN1633, ADDED 6 COND. #24 SHIELDED CABLE INF.		JLD
B	-	ADDED ECN2778	7-15-97	NTC
C	-	ADDED ECN4912	7/13/00	NTC

AMP SOCKET #745495-2 (ECK789)
AMP HENCL BACKSHELL #17-1726-2 (ECK656)

(STANDARD) 6 COND. #24 (ECX551)

(OPTIONAL) 10 COND. #22 (ECX428)

SOCKET	WIRE	WIRE	SIGNAL
1	SHIELD	SHIELD	SHLD
2	RED	VIO	+5V
3	-	-	-
4	-	-	-
5	-	-	-
6	-	-	-
7	-	-	-
8	-	-	-
9	BLK	WHT/RED	ICMDA
10	BLU	YEL	SHUTDOWN
11	-	-	-
12	-	-	-
13	-	-	-
25	-	-	-
24	-	-	-
23	WHT	BRN	FAULT
22	BRN	WHT/YEL	ICMDB
21	-	-	-
20	-	-	-
19	-	-	-
18	-	-	-
17	-	-	-
16	-	-	-
15	-	-	-
14	GRN	WHT/GRN	SIG. COM

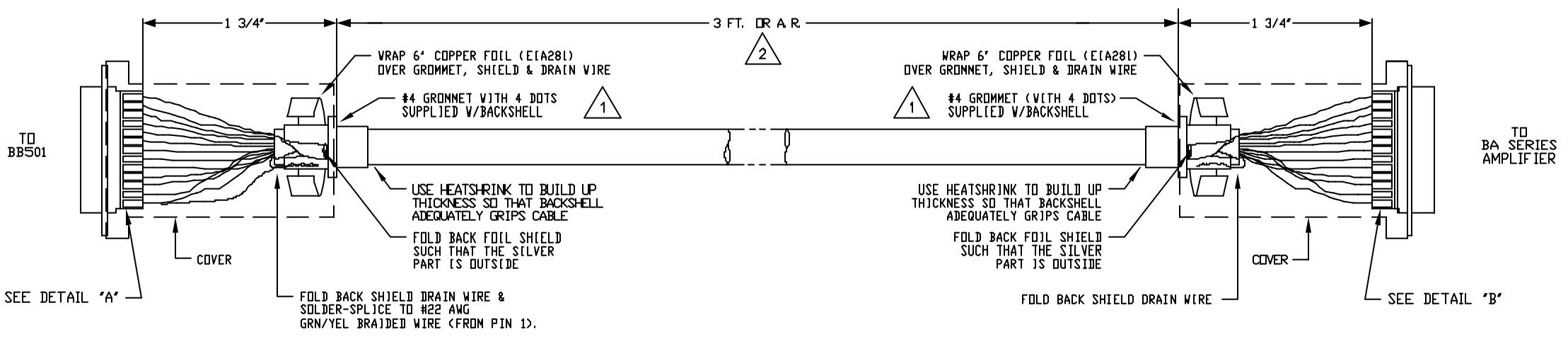
AMP PLUG #745496-2 (ECK786)
AMP HENCL BACKSHELL #17-1726-2 (ECK656)

(STANDARD) 6 COND. #24

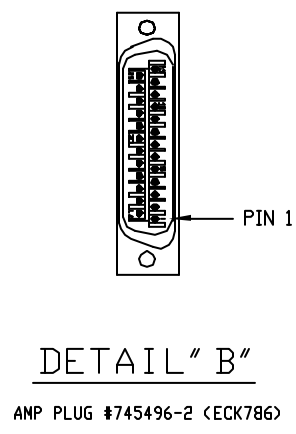
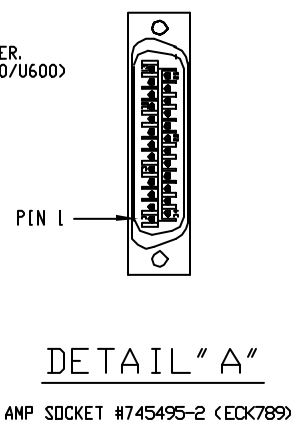
(OPTIONAL) 10 COND. #22 (ECX428)

SIGNAL	WIRE	WIRE	PIN
-	-	-	13
-	-	-	12
-	-	-	11
SHUTDOWN	YEL	BLU	10
ICMDA	WHT/RED	BLK	9
-	-	-	8
-	-	-	7
-	-	-	6
-	-	-	5
-	-	-	4
-	-	-	3
+5V	VIO	RED	2
-	-	-	1
SIG. COM	WHT/GRN	GRN	14
-	-	-	15
-	-	-	16
-	-	-	17
-	-	-	18
-	-	-	19
-	-	-	20
-	-	-	21
ICMDB	WHT/YEL	BRN	22
FAULT	BRN	WHT	23
-	-	-	24
-	-	-	25

UNUSED WIRES (ECX428): TAN, WHT/ORN, WHT/BRN, WHT/GRY



- 4 THIS CABLE IS TO BE USED WITH THE BB501 AND A BA SERIES AMPLIFIER. COMMUTATION IS TO BE DONE EXTERNALLY BY THE CONTROLLER. (EX. U500/U600)
 - 3 FOR CRIMP TOOL USE AMP HANDLE ASSY 58074-1 WITH AMP HEAD ASSY 58063-2
 - 2 STARTING CABLE LENGTH = 3 FT 5 IN
 - 1 FOR STD CABLE (ECX551) USE #4 GROMMET WITH 4 DOTS AS SHOWN BELOW (SUPPLIED W/BACKSHELL)
-



PROPRIETARY INFORMATION
THIS DRAWING IS THE PROPERTY OF AEROTECH, INC. AND IS SUBMITTED IN CONFIDENCE AND SHALL NOT BE REPRODUCED NOR COPIED NOR DISCLOSED TO OTHERS UNDER PENALTY OF LAW.

AEROTECH, INC. 101 Zeta Drive
Pittsburgh, PA. 15238
(412)963-7470 TWX710-795-3125

TOLERANCES ON FRACTIONS DECIMALS ANGLES
0 TO 6 ± 1/32 .XX ± .01 ± 0-30'
OVER 6 ± 1/16 .XXX ± .005

RMS FINISH ✓ EXCEPT AS NOTED

BA SERIES ADAPTER CABLE (BAC2)
(EXT. COMMUTATING CONTROL)

DRAWN	EJB	1/25/96	PART CODE	SIZE	REV.
CHECKED	AGS	7/00	BAC2	C	C
APPD.	AGS	7/00	SCALE 1=1	FILE NAME 630C1596-2C1.DWG	SHEET 1 OF 1