

REVISIONS				
REV.	ZONE	DESCRIPTION	DATE	DRAWN
A		ADDED ECN6945	05/03	JRF

AMP RECEPTACLE #745495-2 (ECK789)  
 AMPHENOL BACKSHELL #17-1726-2 (ECK656)

AEROTECH 630B1145  
 (10 COND. #22), ECX428 (STANDARD)

AMP PLUG, 206044-1 (ECK131)  
 BACKSHELL, 206070-1 (ECK134)  
 #18-24 PINS, 66102-7 (EIK192)

AEROTECH 630B1145  
 (10 COND. #22), ECX428 (STANDARD)

PIN	WIRE	SIGNAL
14	-	-
13	-	-
12	-	-
11	-	-
10	-	-
9	BRN	MTR ØA
8	GRN/YEL	MTR SHLD
7	YEL	MTR ØC
6	WHT/ORN	MTR ØB
5	WHT/YEL	MTR ØC
4	WHT/RED	MTR ØB
3	WHT/BRN	MTR ØA
2	-	-
1	WHT/GRN	FRM GND
1	WHT/GRY	FRM GND

UNUSED WIRES (ECK478):  
 TAN, VIO

SIGNAL	WIRE	SOCKET
MTR SHLD	GRN/YEL	1
FRM GND	-	2
-	-	3
MTR ØC	-	4
MTR ØC	-	5
MTR ØC	-	6
-	-	7
MTR ØB	WHT/ORN	8
MTR ØB	WHT/RED	9
-	-	10
MTR ØA	-	11
MTR ØA	-	12
MTR ØA	-	13
-	-	14
-	-	15
-	-	16
MTR ØA	BRN	25
MTR ØA	WHT/BRN	24
-	-	23
MTR ØB	-	22
MTR ØB	-	21
MTR ØB	-	20
-	-	19
MTR ØC	YEL	18
MTR ØC	WHT/YEL	17
-	-	16
FRM GND	WHT/GRY	15
FRM GND	WHT/GRN	14



FOR CRIMP TOOL USE AMP HANDLE ASSY 90277-1  
 OR USE AMP CRIMPER MODEL #565435-5  
 WITH AMP HEAD ASSY 66102-2



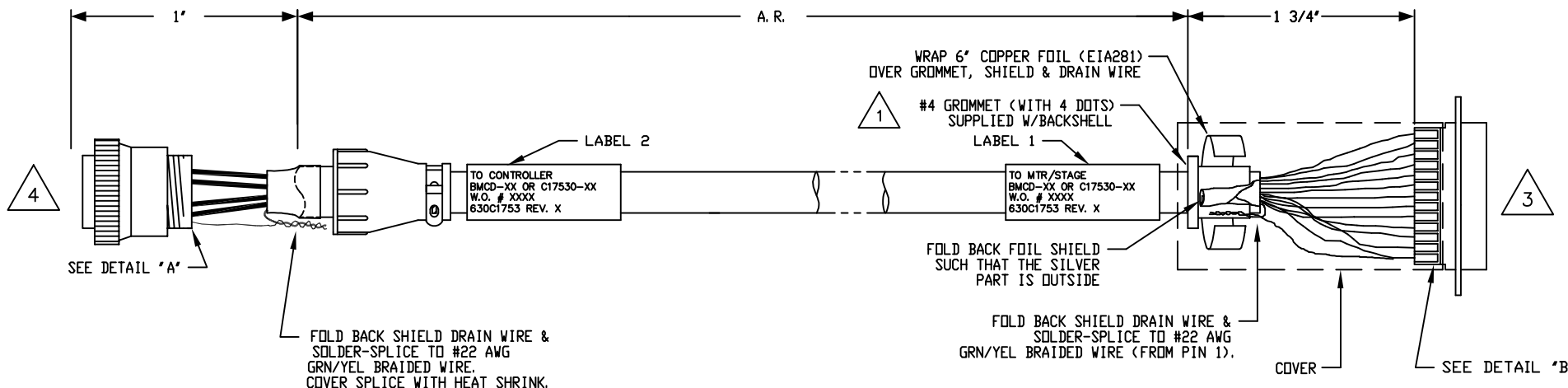
FOR CRIMP TOOL USE AMP HANDLE ASSY 58074-1  
 WITH AMP HEAD ASSY 58063-2



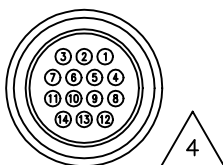
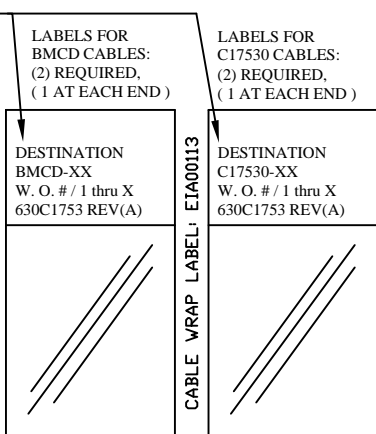
STARTING CABLE LENGTH = 15 FT 6 IN



USE #4 GROMMET WITH 4 DOTS AS SHOWN BELOW  
 WHICH IS SUPPLIED W/BACKSHELL



SEE LABELS 1 & 2  
 FOR DESTINATION



DETAIL "A"

VIEWED FROM WIRE SIDE OF CONNECTOR  
 AMP PLUG #206044-1 (ECK131)



INSERT KEYING PIN (ECK785)  
 INTO PIN 3  
 PIN 1



DETAIL "B"

VIEWED FROM WIRE SIDE OF CONNECTOR  
 AMP RECEPTACLE #745495-2 (ECK789)

PROPRIETARY INFORMATION  
 THIS DRAWING IS THE PROPERTY  
 OF AEROTECH, INC. AND IS  
 SUBMITTED IN CONFIDENCE AND  
 SHALL NOT BE REPRODUCED NOR  
 COPIED NOR DISCLOSED TO OTHERS  
 UNDER PENALTY OF LAW.

TOLERANCES ON  
 FRACTIONS DECIMALS ANGLES  
 0 TO 6 ± 1/32 .XX ± .01 ± 0-30'  
 OVER 6 ± 1/16 .XXX ± .005

RMS FINISH ✓ EXCEPT AS NOTED

DRAWN	EJB	07/98
CHECKED	AGS	07/98
APPD.	AGS	07/98

PART CODE:	
C17530-XX	C17530-1 TO -450 MAX LENGTH (DECIMETERS)
BMCD-XX	BMCD-1 TO -150 MAX LENGTH (FEET)



AEROTECH, INC. 101 Zeta Drive  
 Pittsburgh, PA. 15238  
 (412)963-7470  
 www.aerotech.com

**BRUSHLESS MOTOR CABLE (w/25 PIN "D" CONN.)**  
 450 DECIMETERS (150') MAX LENGTH  
 CABLE: BL MTR-14P-25DU-MAX450DM

PART CODE	SIZE	REV.
SEE ABOVE	C	A
SCALE NTS	FILE NAME	SHEET
	630C1753A1.dwg	1 OF 1