

REVISIONS			
REV.	DESCRIPTION	DRAWN	DATE
A	INITIAL REV.	ZGK	5/19

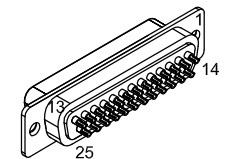
PIN	WIRE	SIGNAL
13	-	-
12	PNK	CW
11	WHT/BLK	HALL C
10	WHT/GRY	HALL A
9	-	-
8	-	DATA-N
7	ORG	MKR
6	WHT/ORG	MKR-N
5	WHT/BRN	HALL B
4	BRN	ID
3	#24 VIO	ENC +5
2	WHT/RED	THERMISTOR
1	-	-
CASE	OUTER SHIELD	OUTER SHIELD

PIN	COLOR	SIGNAL
2	#22 BLK	MTR ØA
3	#22 RED	MTR ØB
4	#22 WHT	MTR ØC
1	#22 GRN/YEL	FRAME / INNER SHLD

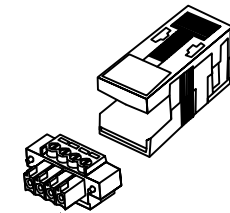
SIGNAL	WIRE	PIN
MTR ØC	#22 WHT	13
MTR ØB	#22 RED	12
MTR ØA	#22 BLK	11
FRAME	#22 GRN/YEL	10
HALL C	WHT/BLK	9
HALL A	WHT/GRY	8
CCW/LMT	GRY	7
LMT COM	#26 GRN/RED	6
LMT COM	-	6
ENC COM	#24 GRN	5
ENC COM	#24 GRN/WHT	5
MKR-N	WHT/ORG	4
SIN-N	WHT/BLU	3
COS-N	WHT/YEL	2
KEY	KEY	1
BOTH SHIELDS	BOTH SHIELDS	CASE

COS	YEL	14
SIN	BLU	15
MKR	ORG	16
ENC +5V	#24 VIO, #24 VIO/WHT	17
ENC +5V	#26 VIO/RED	17
ID	BRN	18
CW/LMT	PNK	19
THERMISTOR	WHT/RED	20
HALL B	WHT/BRN	21
FRAME	#22 GRN/ORG	22
MTR ØA	#22 BLK/ORG	23
MTR ØB	#22 RED/ORG	24
MTR ØC	#22 WHT/ORG	25

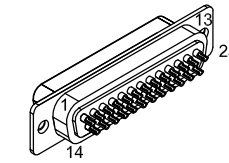
27 COND., #22x8, #24x4, #26x2, #28x13
ALL #28, UNLESS NOTED
(ECX01439)



25 PIN D-STYLE MALE CONNECTOR (ECK00101) BACKSHELL (ECK00656)



4 PIN PLUG W/SCREWS (ECK1523) HOUSING (ECK1520) FERRULES (EIK01001) (TYP. 4 PLS.)



25 PIN FEMALE D-STYLE CONNECTOR (ECK00300) BACKSHELL (ECK00656) JACKSOCKETS (ECK00129)

ADD GOLD JUMPER (EIK00351) (TYP. 4 PLS.)

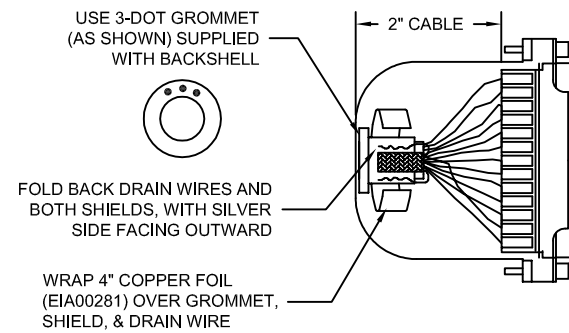
5.) USE THE FOLLOWING FOR CABLE TOLERANCES

METRIC		IMPERIAL ENGLISH	
<0.3m	+25mm	<1ft	+1in
0.3m - 1.5m	+50mm	1ft - 5ft	+2in
1.5m - 3m	+100mm	5ft - 10ft	+4in
3m - 7.5m	+150mm	10ft - 25ft	+6in
>7.5m	+5%/0%	>25ft	+5%/0%

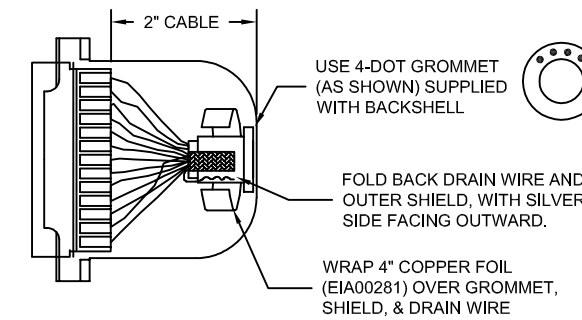
FOR EACH WIRE BUNDLE:

- (a) WRAP WITH ITS FOIL SHIELD TO CONTACT DRAIN WIRE.
- (b) COVER WITH SHRINK-N-SHIELD (ECX01017).

CONNECTOR SHIELDING:



CONNECTOR SHIELDING:

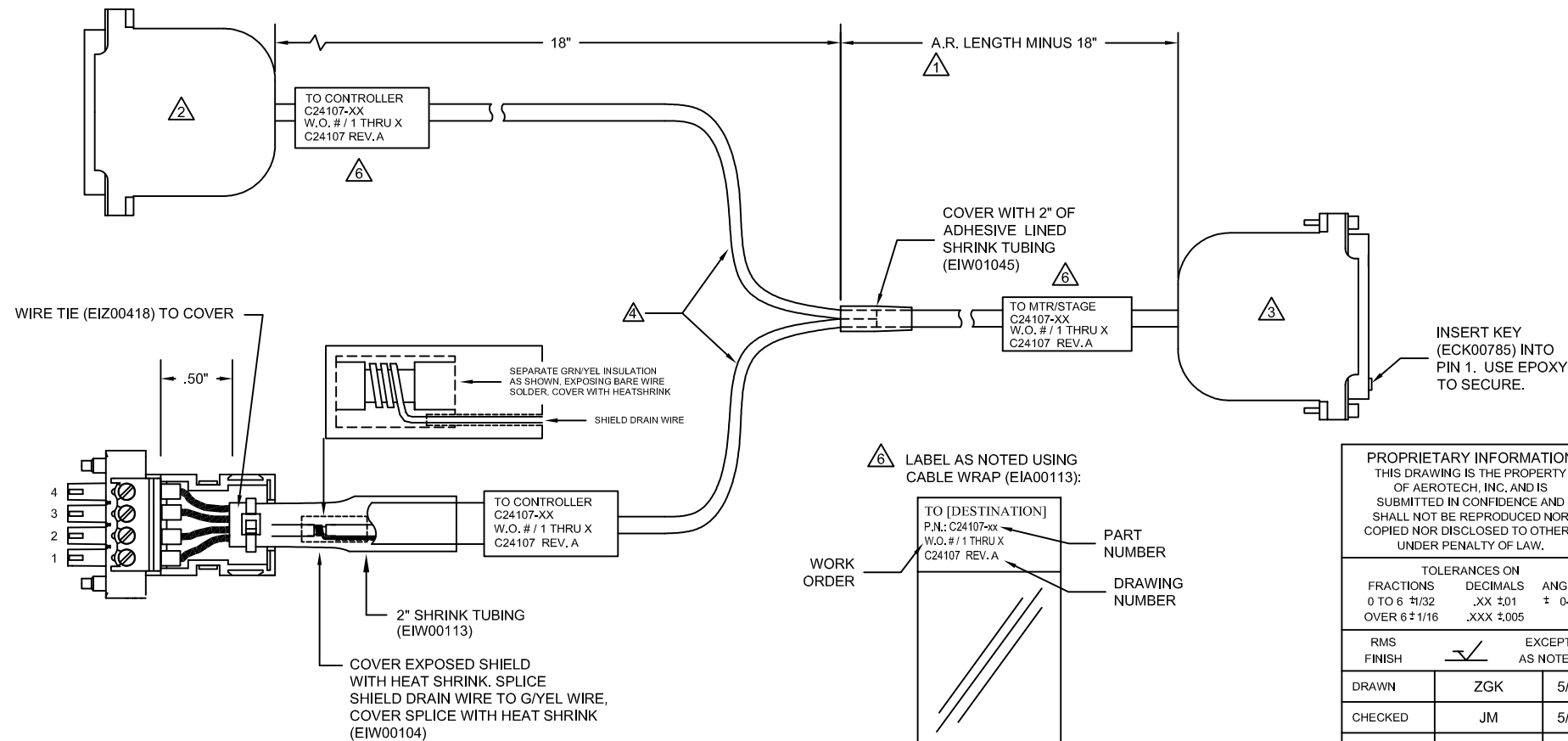


CABLE LENGTH:

CABLE LENGTHS (XX) ARE IN DECIMETERS
EXAMPLE: FOR C24107-30, 30=30 DECIMETERS (3 METERS).

STARTING CABLE LENGTH SHOULD BE 4 INCHES LONGER THAN TOTAL LENGTH OF CABLE.

NOTES:



PROPRIETARY INFORMATION
THIS DRAWING IS THE PROPERTY OF AEROTECH, INC. AND IS SUBMITTED IN CONFIDENCE AND SHALL NOT BE REPRODUCED NOR COPIED NOR DISCLOSED TO OTHERS UNDER PENALTY OF LAW.



AEROTECH, INC., 101 Zeta Drive
Pittsburgh, PA, 15238-2897, USA
HTTP://www.aerotech.com

TOLERANCES ON		
FRACTIONS	DECIMALS	ANGLES
0 TO 6 ±1/32	.XX ±.01	± 0-30'
OVER 6 ±1/16	.XXX ±.005	

RMS FINISH	EXCEPT AS NOTED
<input checked="" type="checkbox"/>	<input type="checkbox"/>

DRAWN	ZGK	5/19
CHECKED	JM	5/19
APPD.	NR	5/19

CABLE: C24107 BL MTR + FB-25D 4TS-25DJS-5ARMS-MAX90DM			
PART CODE	SIZE	C24107	REV. A
C24107-XX	C	C24107	A
SCALE	NTS	FILE NAME	C24107.dwg
SHEET	1 OF 1		