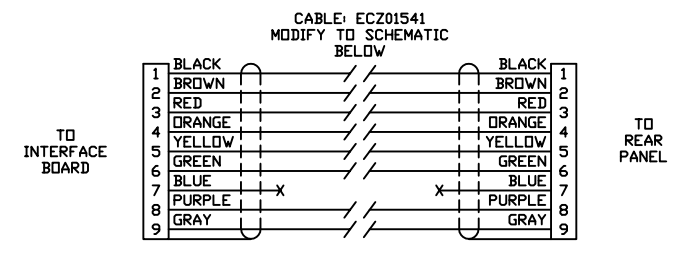
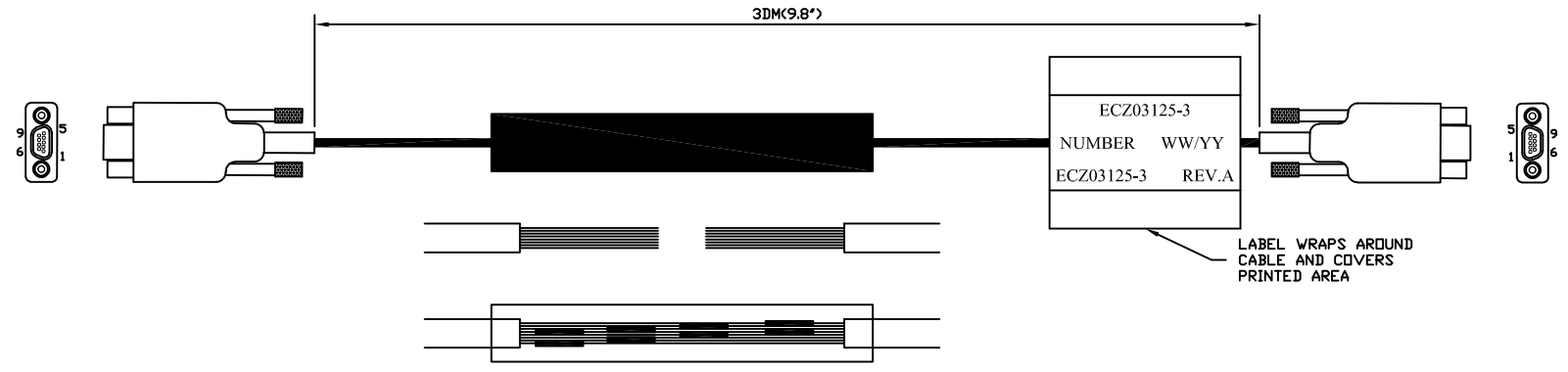


REVISIONS				
REV.	ZONE	DESCRIPTION	DATE	DRAWN
A		INITIAL REV		

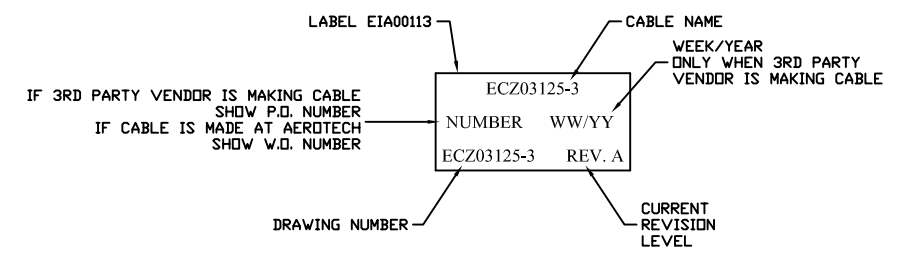


SCHEMATIC



- CUT THE CABLE SO THAT THERE IS HALF THE TOTAL CABLE LENGTH CONNECTED TO EACH CONNECTOR
- REMOVE 1' OF JACKET FROM EACH HALF
- STAGGER SPLICES (4 SETS OF 2)
- ADD OVERALL 3' LENGTH OF HEATSHRINK
- SPLICE AND INSULATE WIRES

NOTES:



PROPRIETARY INFORMATION THIS DRAWING IS THE PROPERTY OF AEROTECH, INC. AND IS SUBMITTED IN CONFIDENCE AND SHALL NOT BE REPRODUCED NOR COPIED NOR DISCLOSED TO OTHERS UNDER PENALTY OF LAW.		AEROTECH, INC. 101 Zeta Drive Pittsburgh, PA. 15238 (412)963-7470 TWX710-795-3125	
TOLERANCES (IMPERIAL [METRIC]) <1ft (0.3m)      +1/-0in (+25/-0mm) 1 - 10ft (0.3 - 1.5m)      +2/-0in (+50/-0mm) 5 - 10ft (1.5 - 3m)      +4/-0in (+100/-0mm) 10 - 25ft (3 - 7.5m)      +6/-0in (+150/-0mm) >25ft (7.5m)      +5%/-0%		CABLE: XC2/XL2e DUAL PSO ADAPTER 9.8" LENGTH	
DRAWN	ZGK	8/2020	PART CODE    SIZE    REV. ECZ03125-3    D    ECZ03125-3    A
CHECKED	JM	8/2020	
APPD.	NR	8/2020	
SCALE	NTS	FILE NAME	SHEET
ECZ03125-3SHT1.dwg		1 OF 1	1 OF 1